



jordanfishwick

Broadacre Place

£1,500 PCM



Broadacre Place, Alderley Edge, SK9 7GR

£1,500 PCM

Broadacre Place is a quiet small select development within convenient reach of Alderley Village and Wilmslow town centre.

This stylish three storey townhouse has been updated and modernised throughout to create an attractive and well planned living space. AVAILABLE LATE FEBRUARY and being offered to the market PART FURNISHED along with benefiting from two off road allocated parking, two and a half bathrooms and a fully enclosed garden make this spacious property an attractive option for the growing family.

Entrance hall, downstairs WC, study/THIRD bedroom, refitted dining kitchen with doors to rear garden, utility room.

To the FIRST floor beautifully presented living room with feature gas fireplace, double bedroom with fitted wardrobes.

To the SECOND floor master bedroom with en-suite bathroom, family bathroom.

Off road parking for two cars Enclosed rear garden.

Contact Wilmslow 01625 536300 £1500.00pcm

COUNCIL TAX F

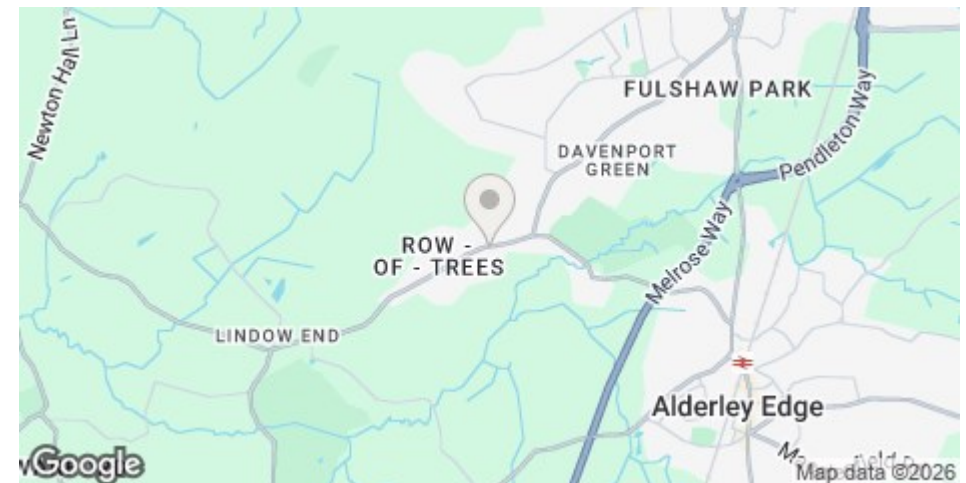
EPC C

LOCATION

This small select development is tucked away off Knutsford Road, offering a peaceful quiet setting but with Wilmslow, Alderley Edge and Knutsford all within easy reach and open countryside only a short walk away.

DIRECTIONS

From Alderley Road Wilmslow, proceed to Knutsford Road and head to the bottom of the road, turn right at the mini roundabout and head out towards Mobberley and Broadacre Place can be found after a short distance on the right hand side



- THREE BEDROOMS
- SMALL QUIET DEVELOPMENT
- TWO ALLOCATED PARKING
- EASY REACH OF ALDERLEY EDGE WILMSLOW AND KNUTSFORD
- COUNCIL TAX F
- EPC C

Postcode - SK9 7GR

EPC Rating - C

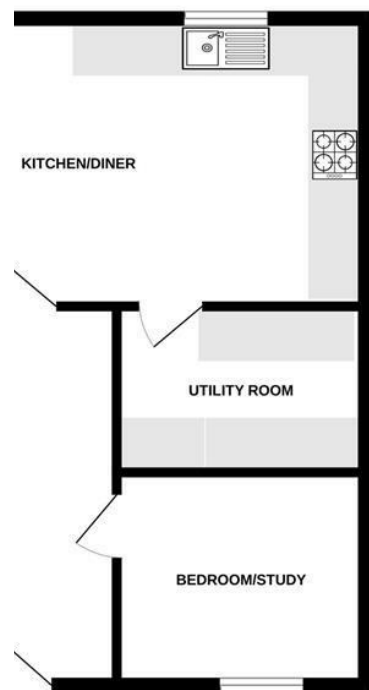
Floor Area - sq ft

Local Authority - Cheshire East Council

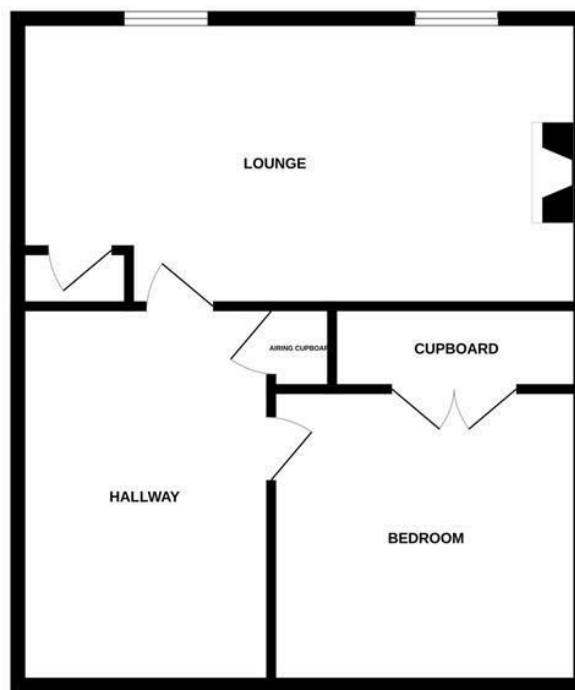
Council Tax - F



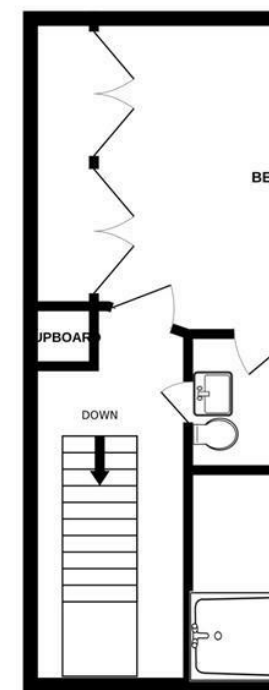
D FLOOR



1ST FLOOR



2ND FLOOR



Measurements are approximate. Not to scale. Illustrative purposes only
Made with Metropix ©2024



These particulars are believed to be accurate but they are not guaranteed and do not form a contract. Neither Jordan Fishwick nor the vendor or lessor accept any responsibility in respect of these particulars, which are not intended to be statements or representations of fact and any intending purchaser or lessee must satisfy himself by inspection or otherwise as to the correctness of each of the statements contained in these particulars. Any floorplans on this brochure are for illustrative purposes only and are not necessarily to scale.

Offices at: Offices at Chorlton, Didsbury, Disley, Hale, Glossop, Macclesfield, Manchester Deansgate, Manchester Whitworth Street, New Mills, Sale, Wilmslow and Withington

01625 536300